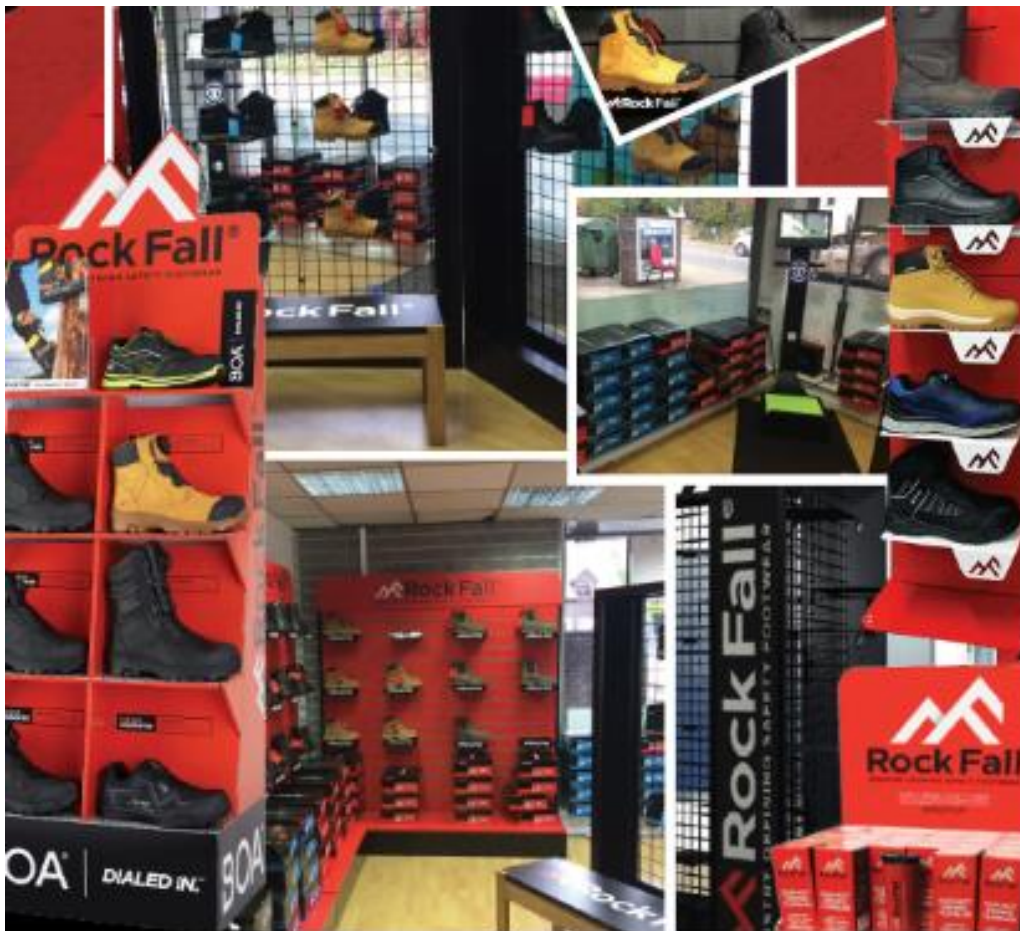




2024 ROCK FALL WOMEN'S & MEN'S SPECIALTY FOOTWEAR



www.DiverseSupplySolutions.net



Rock Fall®

INDUSTRY DEFINING SAFETY FOOTWEAR

RF720 HURRICANE

Women's BOA® safety boot

Specification:

EN ISO 20345:2022 S7S HRO FO SR

EN 61340-4-3:2018 ESD

US Sizes: 4-11 (whole sizes)

Colour: Stone

Fastening: BOA® precision dial



Hurricane has been developed in with women's PPE advocacy groups to create a high-performance women's safety boot using the BOA® precision fit system. Hurricane features a heat resistant outsole, full grain leather upper, and Activ-TEX® waterproof membrane. It's protective features include a composite toecap and PS rated anti-penetration flexi-midsole. The BOA® precision fit system allows the wearer to incrementally increase the fitting using the patented BOA dial. Not only does this create a more even fit across the foot, but the dial is also operable with gloves on and is guaranteed for the lifetime of the boot.

The boot contains an Activ-Step comfort footbed which is made using natural rubber certified as part of the USDA bio preferred programme and recycled polyester. The linings, labels and laces are made with 100% post-consumer recycled polyester.



US Size	4	5	6	7	8	9	10	11
Length (in)	9.10	9.37	9.60	9.9	10.15	10.66	10.94	11.2
Width (in)	8.86	9.06	9.25	9.45	9.65	10.04	10.24	10.43

Scott A. Lambrecht
Principal
(C) 215-292-5441
scott@diversesupplysolutions.net

Kathleen M. Gorman
CEO
(C) 215-588-8300
kathy@diversesupplysolutions.net



Rock Fall®

INDUSTRY DEFINING SAFETY FOOTWEAR

RF3300 IRIS

Women's metatarsal safety boot

Specification:

EN ISO 20345:2022 S7S

HI FO HRO M SR

US Sizes: 4-11 (whole sizes)

Colour: Black

Fastening: Laces



Iris is a waterproof safety boot designed specifically for women and features an internal metatarsal guard.

Iris features a full grain water resistant black leather upper, composite protective toecap and a PS level anti-penetration flexi-midsole, and an Activ-TEX® waterproof membrane lining. The shape of the upper and outsole have been moulded to better fit and support the female foot, with shaped ankle padding and higher arch support.

The IMPACT SHIELD® metatarsal guard is a dual material internal component that sits across the tongue of the boot, adding extra protection across the boot.

The Activ-Step® comfort footbed is made with 87% pre-consumer recycled foam and 100% recycled post-consumer polyester, providing support where you need it most.

US Size	4	5	6	7	8	9	10	11
Length (in)	9.10	9.37	9.60	9.9	10.15	10.66	10.94	11.2
Width (in)	8.86	9.06	9.25	9.45	9.65	10.04	10.24	10.43

Scott A. Lambrecht
Principal
(C) 215-292-5441
scott@diversesupplysolutions.net

Kathleen M. Gorman
CEO
(C) 215-588-8300
kathy@diversesupplysolutions.net





Rock Fall®

INDUSTRY DEFINING SAFETY FOOTWEAR

RF725 CARBON

Women's high-leg safety boot

Specification:

EN ISO 20345:2022 S7S FO SR
EN 61340-4-3:2018 ESD

US Sizes: 4-11 (whole sizes)

Colour: Black

Fastening: Laces & side YKK zip



Carbon has been developed in conjunction with women's PPE advocacy groups to create a high-performance women's safety boot. Using the latest in material technology, **Carbon** features a shock absorbing nitrile rubber outsole, FORCE10® scuff cap, Activ-TEX® waterproof membrane, and a full grain black leather upper. Protective components include a fibreglass toecap, and an anti-penetration flexi-midsole tested to PS level.

The boot contains an Activ-Step comfort footbed which is made using natural rubber certified as part of the USDA bio preferred programme and recycled polyester.

The linings, labels and laces are made with 100% post-consumer recycled polyester.

US Size	4	5	6	7	8	9	10	11
Length (in)	9.10	9.37	9.60	9.9	10.15	10.66	10.94	11.2
Width (in)	8.86	9.06	9.25	9.45	9.65	10.04	10.24	10.43

Scott A. Lambrecht
Principal
(C) 215-292-5441
scott@diversesupplysolutions.net

Kathleen M. Gorman
CEO
(C) 215-588-8300
kathy@diversesupplysolutions.net



RF250 RHODIUM

Chemical splash resistant
safety boot

Specification:
 EN ISO 20345:2011 S3 WR SRC
 EN 13832-2:2018 / Type U / K & L
 200J-A-E-WV-PY
 BS EN 61340-4-3:2018 ESD
 US Sizes: 4-14 (whole sizes)
 Colour: Black
 Fastening: Laces



Rhodium is chemical splash resistant boot designed to be suitable in chemical, engineering, and electronics working environments.

Rhodium features a non-metallic toecap and flexi-midsole, an Activ-TEX® waterproof membrane, R-Ten abrasion and chemical resistant threads, and lining made with 60% recycled materials. The upper is made from a chemical splash resistant microfibre which is certified to be resistant to corrosive chemicals according to the EN 13832-2:2018 Type U tests. Also featured on Rhodium is an BASF® chemical resistant PU outsole and an EVA comfort footbed.

Rhodium is also certified by the Vegan society to contain no animal products in the product or manufacturing.

US Size	4	5	6	7	8	9	10	11	12	13	14
Length (in)	9.37	9.6	10.00	10.35	10.71	11.02	11.34	11.69	12.01	12.36	12.70
Width (in)	9.21	9.41	9.32	9.69	9.92	10.20	10.43	10.67	10.94	11.18	11.39

Scott A. Lambrecht
 Principal
 (C) 215-292-5441
 scott@diversesupplysolutions.net

Kathleen M. Gorman
 C.E.O.
 (O) 215-588-8300
 kathy@diversesupplysolutions.net



RF810 ARC

Electrical hazard
lineworker boot

Specification:

EN ISO 20345:2011 SB P CI E FO
WRU HRO WR SRC
AS/NZ 2210.3:2019 SB P CI E FO
WRU HRO WR SRC
ASTM F 2413-18 M/I/C EH PR

US Sizes: 6-14 (Inc. 7.5 & 11.5)

Colour: Black

Fastening: Laces

Ortholite®
comfort foam insoles

R-TEN™
ABRASION RESISTANT THREAD

IMPACT
SHIELD
DIGGING PLATE

FORCE10®

HELCOR®
LEADER-TEC

MOISTURE-TECH
BY SYMPATEX

Arc is a feature-packed electrical hazard lineworker boot designed to withstand electrical and thermal hazards of the Electric Arc test method.

Arc features a non-metallic protective toecap and flexi-midsole, an IMPACT SHIELD® digging plate across the waist cleat, a Moisture-Tech waterproof membrane, and a FORCE10® outsole. The upper is made with a water repellent full-grain black leather from gold certified Leather Working Group tanneries, with a Helcor® leather climbing irons loop tab at the back. The upper is triple stitched with R-Ten® abrasion resistant threads that are durable against wear and corrosive materials.

Arc has been independently to the IEC 61482-1-1:2019 electric arc test method, as well as other standard electrical hazard tests, and is a pioneer in electrical safety footwear.



US Size	6	7	8	9	10	11	12	13	14
Length (in)	10.00	10.35	10.71	11.02	11.34	11.69	12.01	12.36	12.70
Width (in)	9.32	9.69	9.92	10.20	10.43	10.67	10.94	11.18	11.39

Scott A. Lambrecht
Principal
(C) 215-292-5441
scott@diversesupplysolutions.net

Kathleen M. Gorman
C.E.O.
(O) 215-588-8300
kathy@diversesupplysolutions.net

DSS
DIVERSE SUPPLY SOLUTIONS

RF800 POWERMAX

An electrical hazard linesworker boot

Specification:

EN ISO 20345:2011 SB P E WRU FO
CI HRO WR SRC

AS/NZ 2210.3:2019 SB P CI E FO
WRU HRO WR SRC

ASTM F 2413-18 M/I/C EH PR

US Sizes: 6-15 (INC 7.5 and 11.5)

Colour: Black

Fastening: Laces



The **PowerMax** is an electrical hazard linesworker boot developed with specialist durability materials that are certified to withstand electrical risks of 18kV in accordance with the ASTM F2412-18 test method.

The boot includes FORCE10® components, Helcor® abrasion resistant leather, Moisture-tech by Sympatex® waterproof membrane, IMPACT SHIELD™, R-TEN™ thread and Activ-Step® Comfort Footbed.

The sole and upper are also compatible with most common climbing irons, along with a protective toecap and midsole all whilst being 100% non-metallic.



US Size	6	7	8	9	10	11	12	13	14	15
Length (in)	10.00	10.35	10.71	11.02	11.34	11.69	12.01	12.36	12.70	12.82
Width (in)	9.32	9.69	9.92	10.20	10.43	10.67	10.94	11.18	11.39	11.77

Scott A. Lambrecht
Principal
(C) 215-292-5441
scott@diversesupplysolutions.net

Kathleen M. Gorman
C.E.O.
(O) 215-588-8300
kathy@diversesupplysolutions.net



RF7000 VULCAN

Foundry boot

Specification:
 EN ISO 20349-1:2017
 A1:2020 S3 HI CI HRO SRC Fe
 US Sizes: 6-15 (Whole sizes)
 Colour: Black
 Fastening: Laces



The **Vulcan** is a foundry boot developed with specialist durability materials that are certified to withstand molten splashes as high as 1400°C.

Using FORCE10® components, FR leather and R-TEN™ FR stitching and Activ-Step® comfort footbed, this boot can handle anything you throw at it whilst keeping your feet comfortable and protected.

This boot comes with even more protection with its protective toecap and midsole.



US Size	6	7	8	9	10	11	12	13	14	15
Length (in)	10.00	10.35	10.71	11.02	11.34	11.69	12.01	12.36	12.70	12.82
Width (in)	9.32	9.69	9.92	10.20	10.43	10.67	10.94	11.18	11.39	11.77

Scott A. Lambrecht
 Principal
 (C) 215-292-5441
 scott@diversesupplysolutions.net

Kathleen M. Gorman
 C.E.O.
 (O) 215-588-8300
 kathy@diversesupplysolutions.net



RF8000 HELIOS

Electrical hazard & foundry boot

Specification:

EN ISO 20349-1:2017

A1: 2020 SB P E WRU FO HI CI

HRO M SRC Fe

ASTM F 2413-18 M/I/C EH PR Mt

US Sizes: 7-13 (whole sizes)

Colour: Black

Fastening: Hook & loop flap

Ortholite®
comfort foam insoles

RTEN™
FLAME RESISTANT THREAD

IMPACT SHIELD®
INTERNAL DIGGING PLATE

Helios is a high-performance foundry boot made with components and materials designed for durability as well as safety.

Helios features a non-metallic protective toecap and flexi-midsole, **IMPACT SHIELD®** internal metatarsal guard protection, and a heat resistant dual density nitrile rubber outsole. The upper is made from certified flame retardant leather, sourced from Gold standard Leather Working Group tanneries, and is resistant to molten metal splashes. The panels are triple-stitched with R-Ten® threads which are highly durable and flame resistant.

Helios is also certified to electrical hazard tests, and can withstand risks of 18kV in accordance with the ASTM F2412-18 test method. Featured with Helios is an Ortholite® climate breathable comfort footbed.



US Size	7	8	9	10	11	12	13
Length (in)	10.35	10.71	11.02	11.34	11.69	12.01	12.36
Width (in)	9.69	9.92	10.20	10.43	10.67	10.94	11.18

Scott A. Lambrecht
Principal
(C) 215-292-5441
scott@diversesupplysolutions.net

Kathleen M. Gorman
C.E.O.
(O) 215-588-8300
kathy@diversesupplysolutions.net



RF290 SILT

High leg all weather safety welly

Specification:
EN ISO 20345:2011 S5 CI HRO
SRC

US Sizes: 4-15

Colour: Blue/Orange



The **Silt** footwear is a highly durable and protective option designed for demanding environments. Its 100% non-metallic construction ensures compliance with safety regulations and is ideal for settings requiring non-metallic footwear. Equipped with a protective toecap and midsole, the Silt safeguards against impact, compression, and puncture hazards. The use of specialist durability materials, including FORCE10® components, enhances the boots resilience and longevity. The Activ-Step® PU footbed offers exceptional cushioning and support, optimizing comfort for prolonged wear. Additionally, the 5mm neoprene upper provides a flexible and snug fit while protecting against water and debris. This combination of features makes the Silt footwear a robust and reliable choice for those seeking durable, comfortable, and safety-compliant footwear in challenging work environments.



US Size	4	5	6	7	8	9	10	11	12	13	14	15
Length (in)	9.37	9.6	10.00	10.35	10.71	11.02	11.34	11.69	12.01	12.36	12.70	12.82
Width (in)	9.21	9.41	9.32	9.69	9.92	10.20	10.43	10.67	10.94	11.18	11.39	11.77

Scott A. Lambrecht
Principal
(C) 215-292-5441
scott@diversesupplysolutions.net

Kathleen M. Gorman
C.E.O.
(O) 215-588-8300
kathy@diversesupplysolutions.net



RF611 DOLOMITE

Mid cut BOA® Safety boot

Specification:
EN ISO 20345:2011 S3 HI HRO
WR SRC

US Sizes: 4-17

Colour: Black



Dolomite is a 100% non-metallic footwear designed for durability and safety, featuring a protective toecap and midsole alongside FORCE10® components for robustness.

It incorporates advanced technologies like the Moisture-tech by Sympatex® waterproof membrane for moisture protection and breathability, along with IMPACT SHIELD™ for added impact resistance. The BOA® Fit System allows for a precise and secure fit. Dolomite combines specialist materials and technologies to offer reliable performance and protection in demanding environments.



US Size	4	5	6	7	8	9	10	11	12	13	14	15	16	17
Length (in)	9.37	9.6	10.00	10.35	10.71	11.02	11.34	11.69	12.01	12.36	12.70	12.82	13.03	13.28
Width (in)	9.21	9.41	9.32	9.69	9.92	10.20	10.43	10.67	10.94	11.18	11.39	11.77	11.96	12.16

Scott A. Lambrecht
Principal
(C) 215-292-5441
scott@diversesupplysolutions.net

Kathleen M. Gorman
C.E.O.
(O) 215-588-8300
kathy@diversesupplysolutions.net



Rock Fall®

INDUSTRY DEFINING SAFETY FOOTWEAR

RF710 MAGMA

High leg BOA® safety boot

Specification:

EN ISO 20345:2011 S3

HI HRO WR M SRC

US Sizes: 6-13 (whole sizes)

Colour: Black

Fastening: BOA® dial system



Magma is a high-performance safety boot with added safety features and a BOA® precision fit system.

Magma features a FORCE10® heat resistant outsole, TPU scuff cap, IMPACT SHIELD® shock resistant digging plate, metatarsal guard, and a Sympatex waterproof membrane lining.

The BOA® precision fit system allows the wearer to incrementally increase the fitting using the patented BOA dial. Not only does this create a more even fit across the foot, but the dial is also operable with gloves on and is guaranteed for the lifetime of the boot.

The Activ-Step® comfort footbed is made with 87% GRS pre-consumer foam and 100% recycled post-consumer polyester, providing support where you need it most.

US Size	6	7	8	9	10	11	12	13
Length (in)	10.00	10.35	10.71	11.02	11.34	11.69	12.01	12.36
Width (in)	9.32	9.69	9.92	10.20	10.43	10.67	10.94	11.18

Scott A. Lambrecht
Principal
(C) 215-292-5441
scott@diversesupplysolutions.net

Kathleen M. Gorman
CEO
(C) 215-588-8300
kathy@diversesupplysolutions.net





Contact Information

- Kathleen Gorman – CEO
- Cell: (215) 588-8300
- Email: kathy@diversesupplysolutions.net

- Scott Lambrecht – Principal
- Cell: (215) 292-5441
- Email: scott@diversesupplysolutions.net

Social Media Presence:

- Facebook for Business, Instagram for Business, and LinkedIn

The full line of DSS' Footwear offerings can be found under the "Download Catalogs" section on our website:

www.DiverseSupplySolutions.net